

A world map with a light blue background and white outlines of continents and countries. A red circle is placed over the Czech Republic in Central Europe. The map is centered on the Atlantic Ocean.

Creation of a Czech BCSD

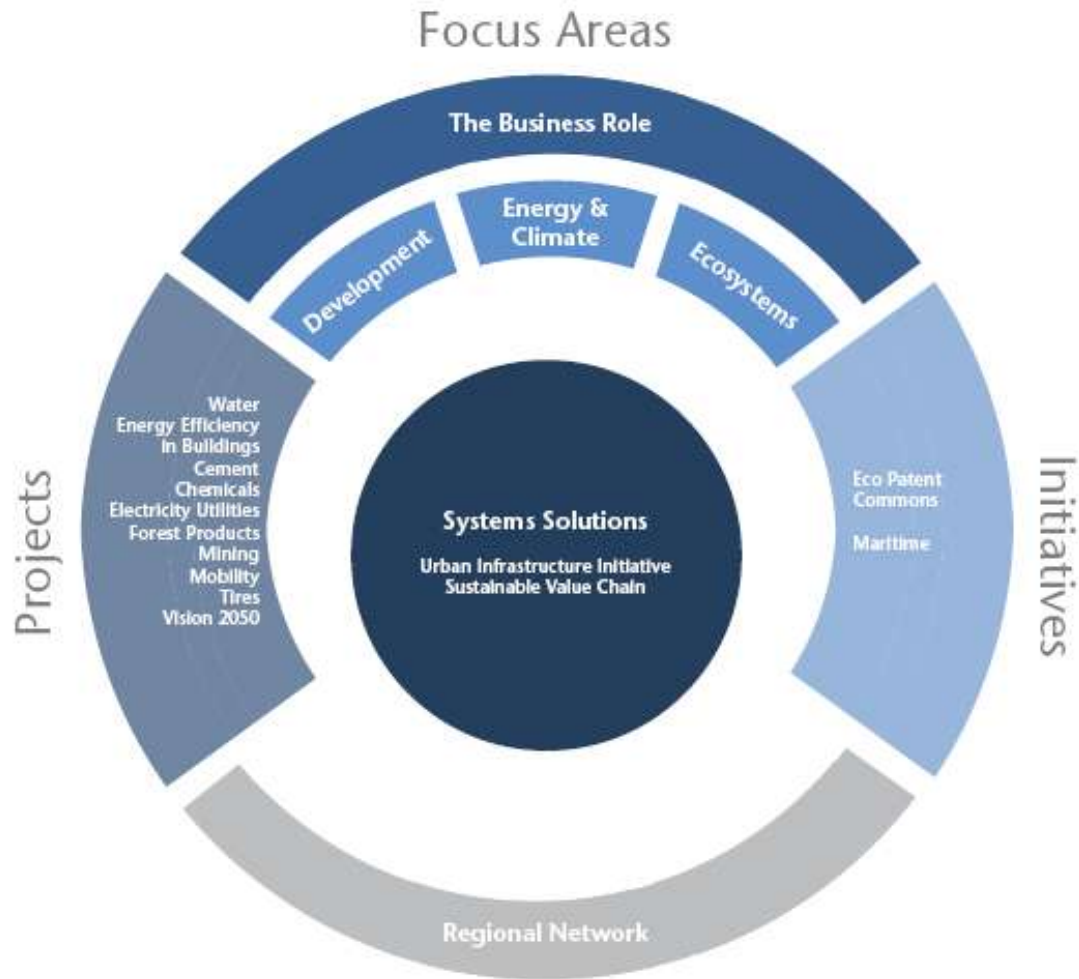
- 1. Brief overview of the WBCSD**
- 2. The Regional Network**
- 3. Creation of a Czech BCSD**

WBCSD

Coalition of some 200 leading companies

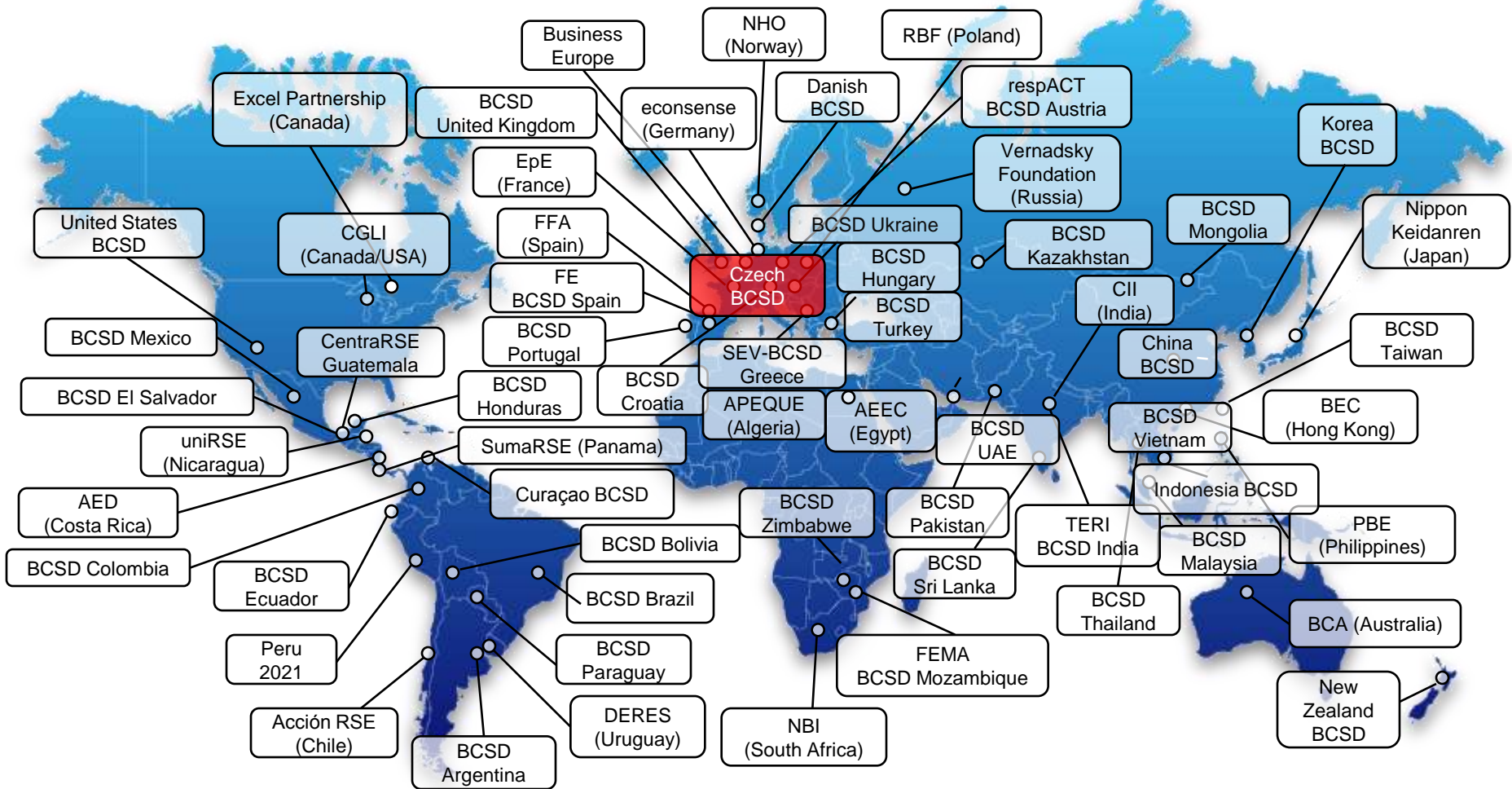
- Market capitalization: 7,000 BUSD
- Total member company employees: 13 million
- Global outreach
 - *Supplies products and services to half of the world's population every day*

WBCSD Work Program

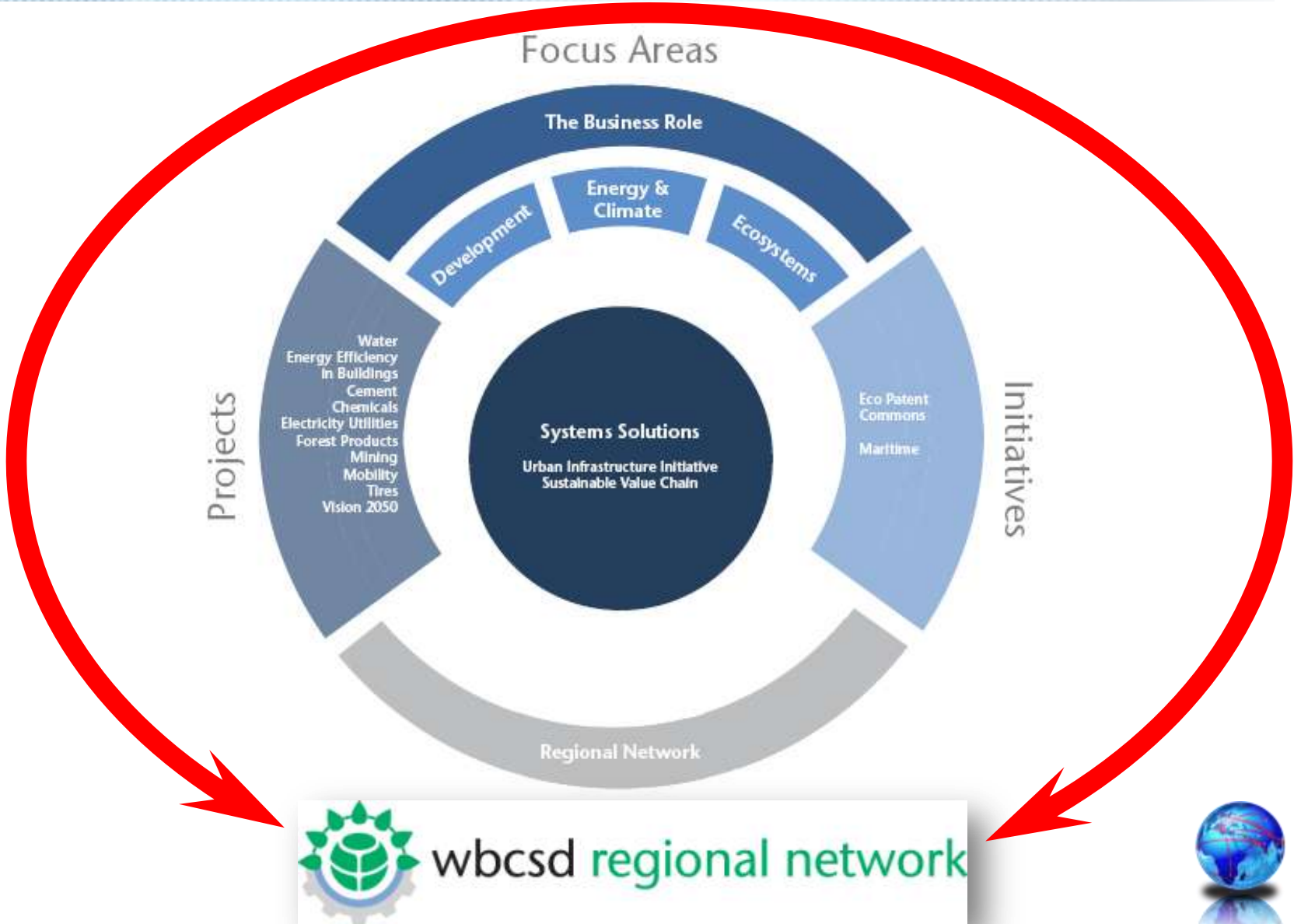


1. Brief overview of the WBCSD
2. **The Regional Network**
3. Creation of a Czech BCSD

WBCSD's Regional Network



WBCSD Work Program



Advocacy & Communications



Collaborative Action on International Processes



Tools: Greenhouse Gas Protocol



Initiatives: Energy Efficiency in Buildings

عازمون على إحدات تقيد

تحديات و الأزمات

كفاءة الطاقة في المباني

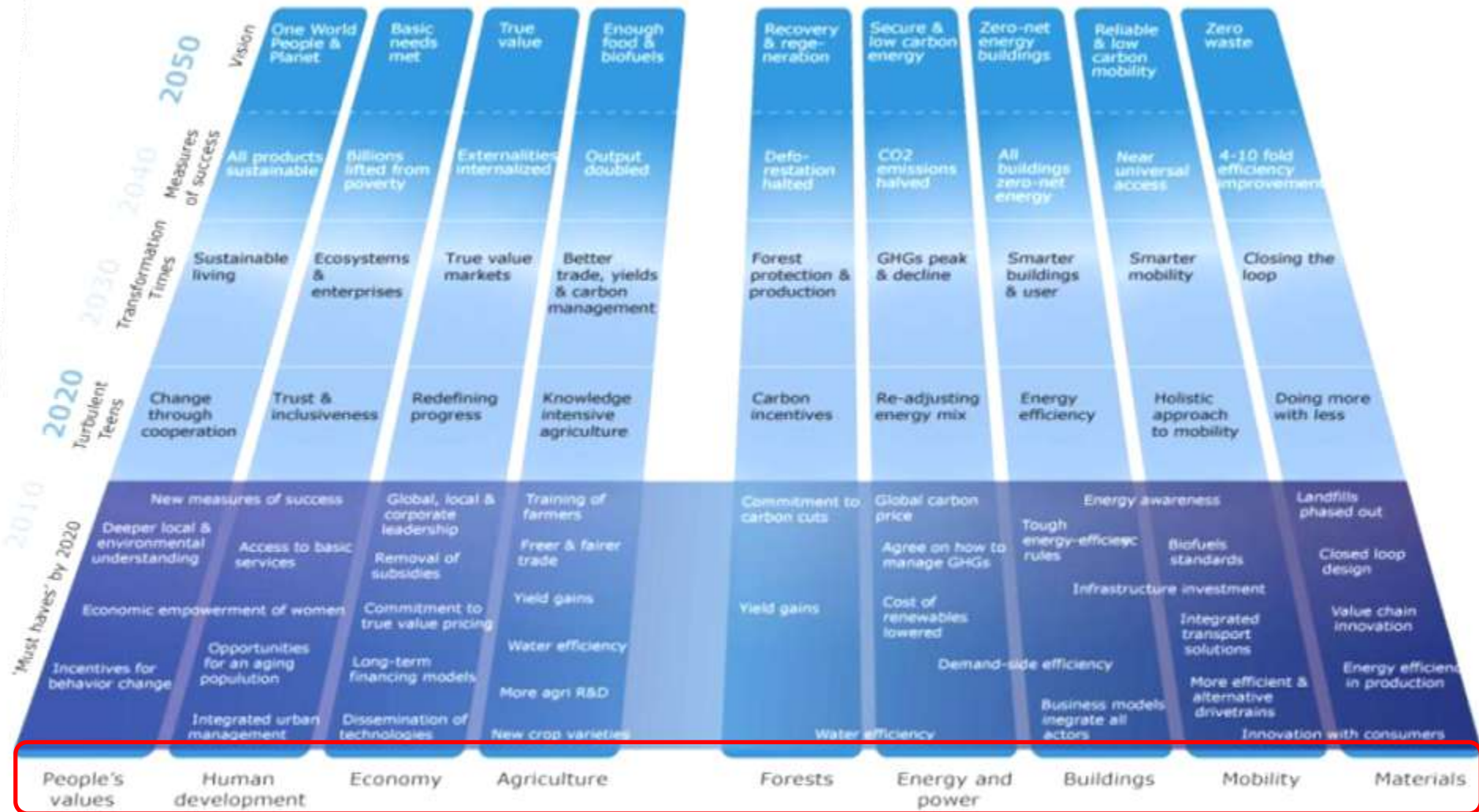
خلاق وورصن الأجداد



- Manifesto to improve energy efficiency in buildings
- 12 signatories in the Regional Network

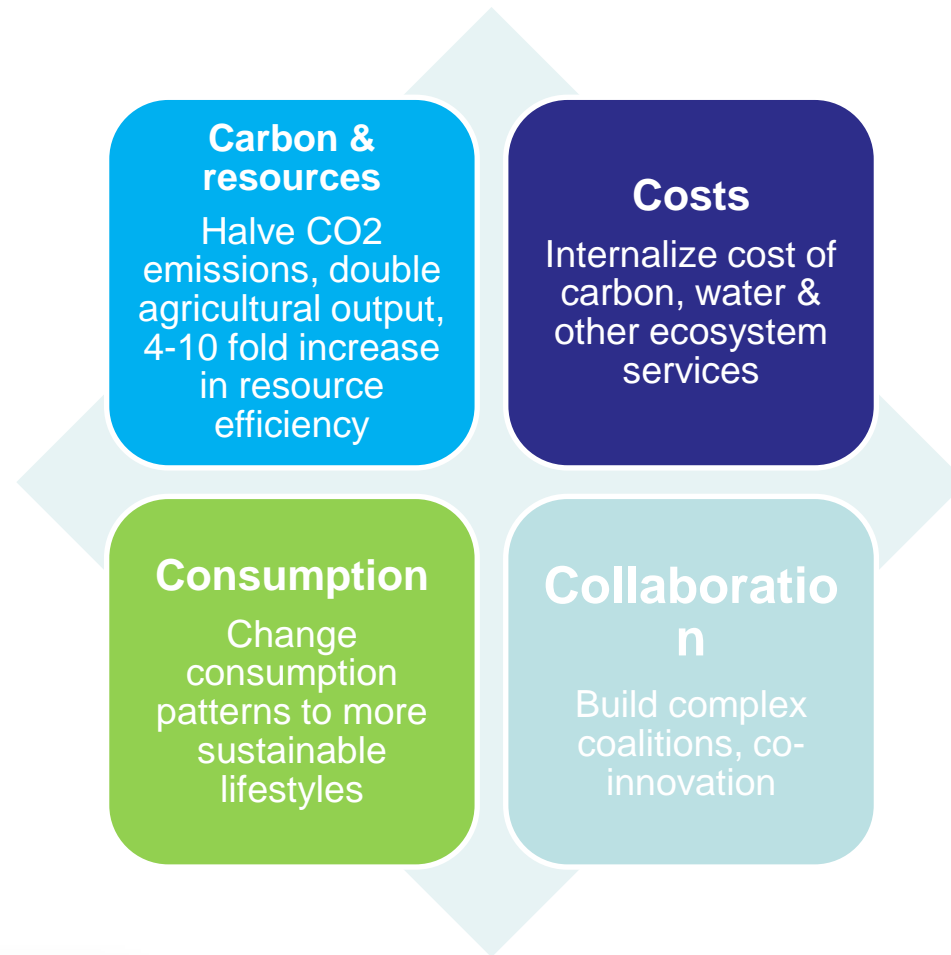


Moving Forward: Vision 2050 & Changing Pace



TODAY

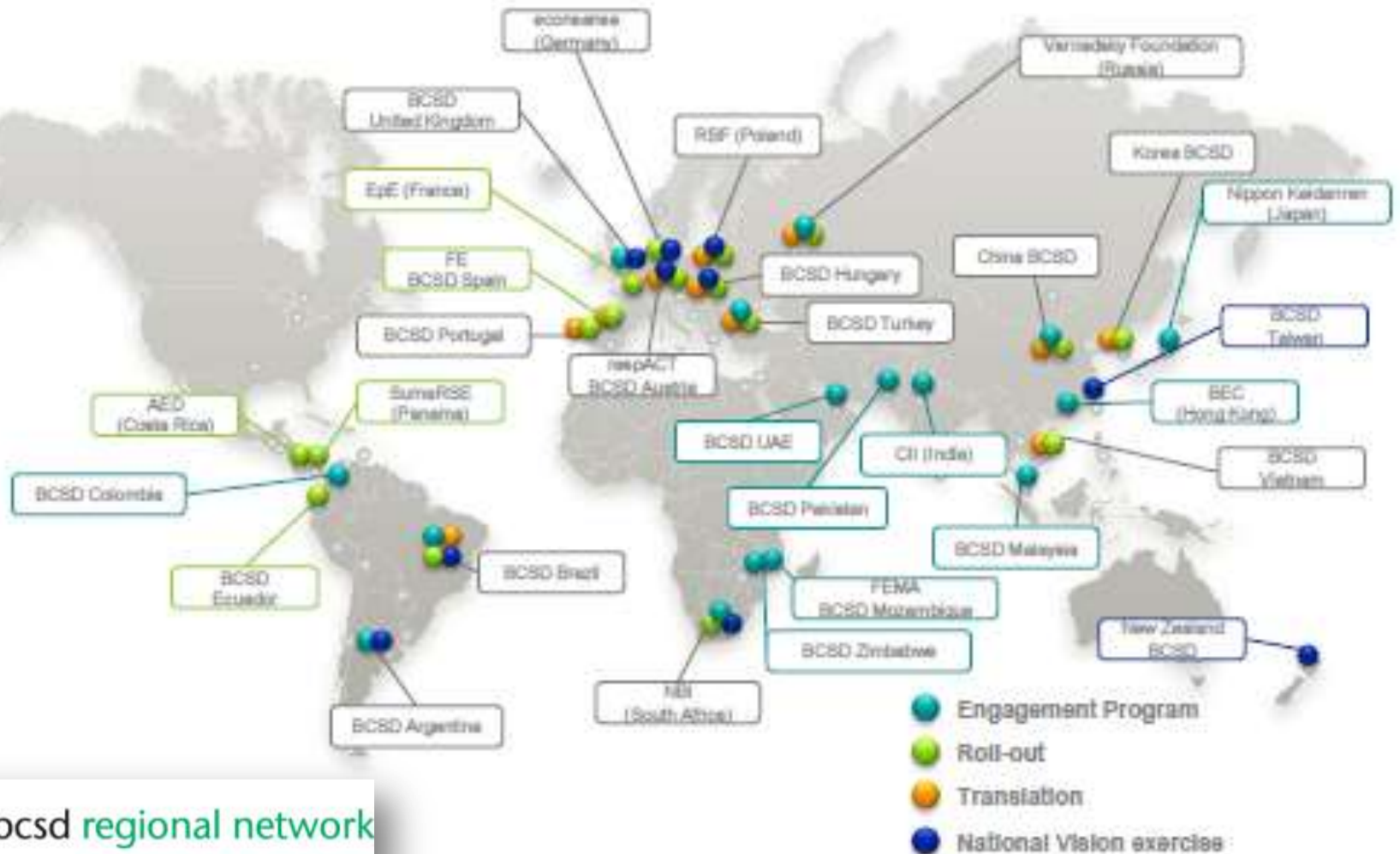
Closing the gap: Reaching the vision



Business Opportunities in Vision 2050



Vision 2050 Regional Engagement



1. Brief overview of the WBCSD
2. The Regional Network
3. Creation of a Czech BCSD

Why a Czech BCSD?



A world increasingly shaped by Sustainable Development issues

- The race towards a more inclusive, low carbon and resource societies is on
- Global challenges will become key strategic drivers for business and innovation
- There is a need for closer cooperation between governments, business and civil society to accelerate change

Value of a Czech BCSD

- Platform for interaction of leading companies and senior level decision makers on SD issues
- Awareness creation on the Business Case for SD
- Business antenna for emerging SD issues and trends
- Enriching and influencing the debate and public policy
- Access to leading edge-SD thinking through the WBCSD
- Cooperation with other BCSDs within Regional Network



How does it work?

- Leading local companies and foreign subsidiaries
- CEO-led organisation
- Governance:
 - **Council** represented by CEOs (meet 1x/year)
Role: decide on strategic issues and direction, appoint BCSD Chairman and ExCom members, approve membership fee and budget
 - **BCSD Chairman and Executive Committee**
Role: appoints BCSD Executive Director, approve work program, signs off reports, membership issues and appoints auditors
 - **BCSD Executive Director and Secretariat**
Role: coordinate work, day to day work program, staff and budget and external representation



Thank you

www.wbcd.org

